

# MOLD RESCUE

# MAINTENANCE



Nagoya Precision Mold Co.,Ltd

**MEISEI**  
luminance device  
engineers

**Consult us first**  
**Will propose best for you**

**TEL: 937-701-4997**

**MAIL: eigyo@nagoya-sk.co.jp**

OK with Large-sized Mold

OK with On-site Mold Repair shuttle

OK with emergency repair

OK with specifically designated Mold such as hot runner mold

OK in case of No designing drawings/data

OK with re-engineering Mold, developed by other mold manufacturer

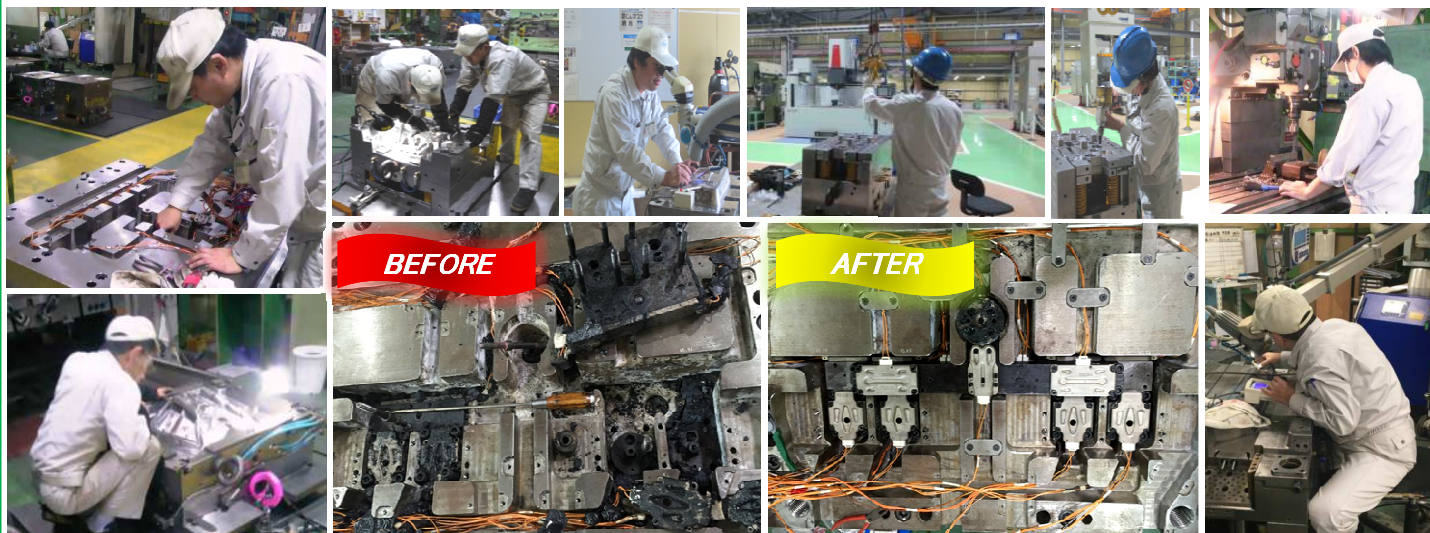
On-site defect inspection/judgement

Mold scratch/lust Recovery POLISH

periodical overhaul to decrease disorder

**MEISEI**  
**WILL**  
**respond to**  
**MOLD**  
**difficulties**

Contact us  
from Website



Equipment	Ohio Branch
Overhead Traveling Crane	20t
Machining Center	(Work Size) 2000X1100
EDM	(Work Size) 2600X1400
Surface Grinder	-
Milling Machine	-
Injection Machine	600t

**Nagoya Precision Mold Co.,Ltd**

**Ohio Branch**

Intra-ITI Office, 94 Mosier Parkway Brookville,  
Ohio 45309 USA

